

HE DN Series •SOLID FULL-PASSAGE SEWAGE PUMP

Feature

- Recessed vortex impeller
- 2.5" & 3" (65mm & 76mm) solid free-passage
- EKK Eagle Burgmann double mechanical seal in Si.Ca
- Stainless steel motor housing

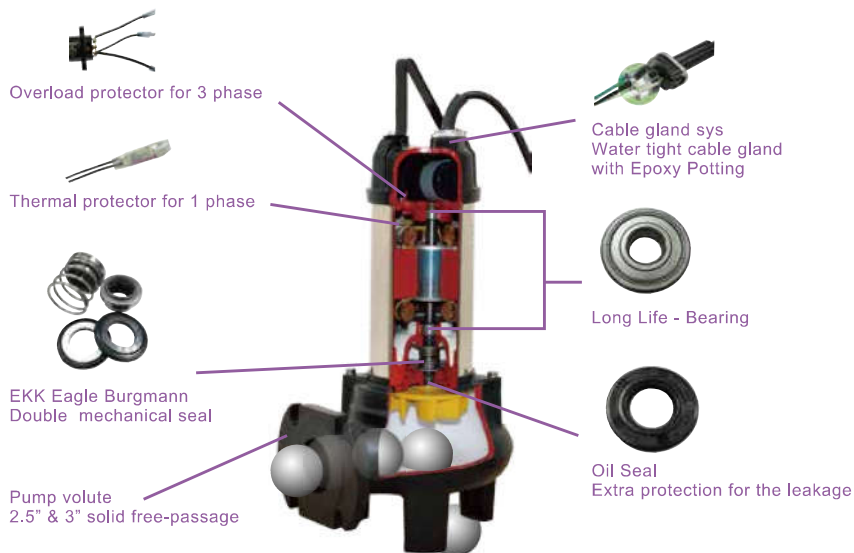
Applications

- For heavy-duty applications with soiled biological wastewaters, sewage, rainwater
- For both domestic and professional use

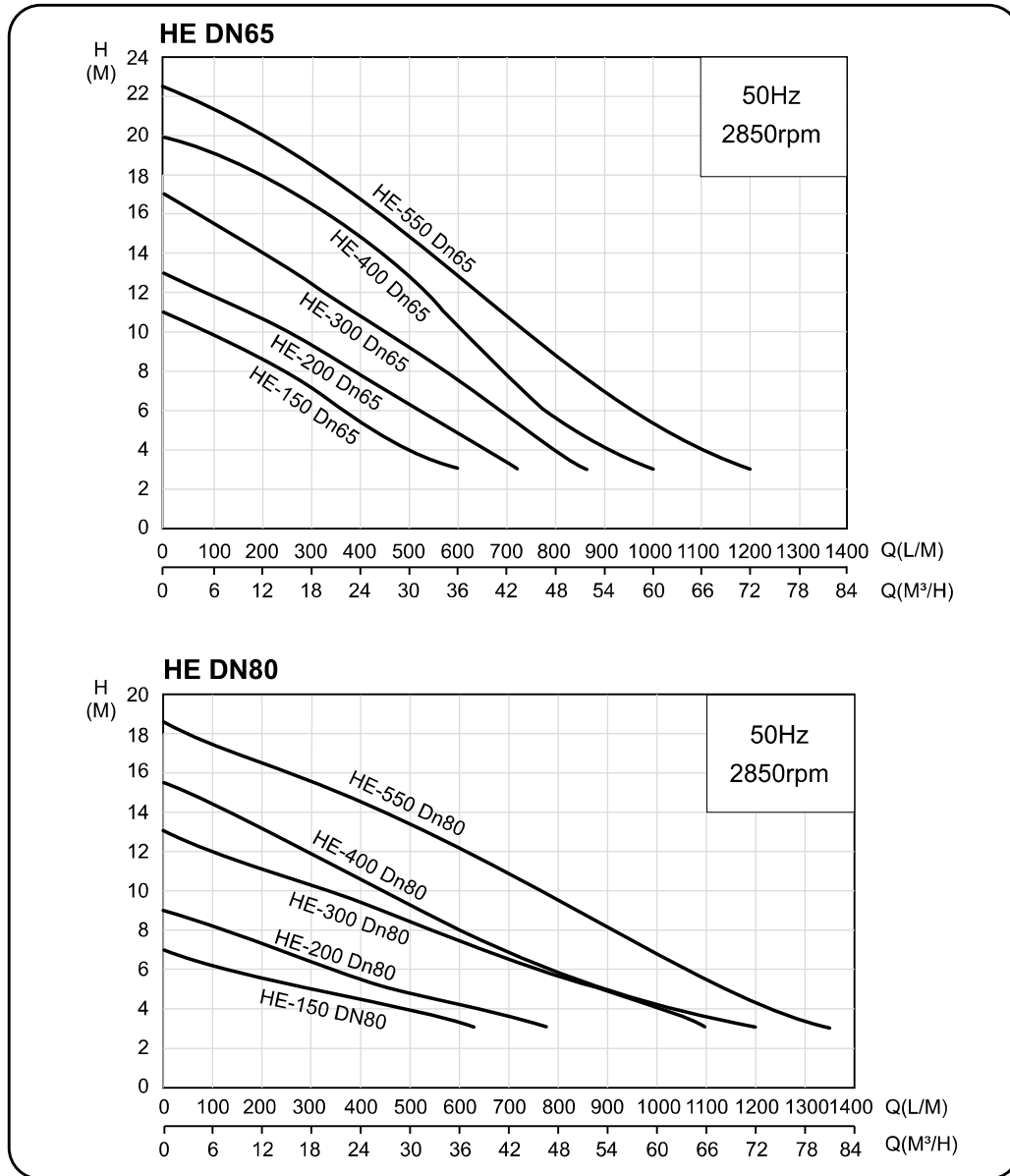
Operating Limits

- Viscosity of treated fluid : 1 mm²/s
- Density of treated fluid : 1 kg/dm³
- Max starts per hour : 20

Sectional view



Performance Curves



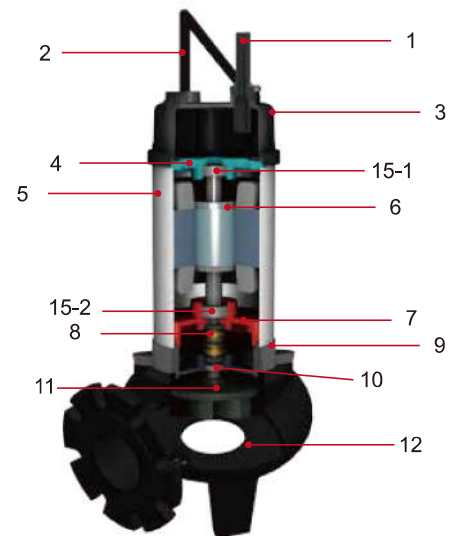
Type	Output		Discharge Inch	F.L.A		Rated		Maximum		Free Passage mm	Weight		QDC
	HP	KW		1Ø230V	3Ø 400V	Head(m)	CAP(LPM)	Head(m)	CAP(LPM)		1ØKg	3Ø Kg	
HE-150 DN65	1.5	1.1	2.5"	10	3	6.6	330	11	600	65	26.3	26.3	QM-65
HE-200 DN65	2	1.5	2.5"	12	3.9	8.4	360	13	720	65	28.5	28.5	QM-65
HE-300 DN65	3	2.2	2.5"	-	6	12.6	300	17	870	65	-	29.6	QM-65
HE-400 DN65	5	3	2.5"	-	6.5	13	500	20	1000	65	-	37.3	QM-65
HE-550 DN65	4.5	4.1	2.5"	-	9.1	15	500	22.5	1200	65	-	39.3	QM-65
HE-150 DN80	1.5	1.1	3"	10	3	4.4	415	7	630	76	29.6	29.6	QD-80
HE-200 DN80	2	1.5	3"	12	3.9	5	460	9	780	76	31.8	31.8	QD-80
HE-300 DN80	3	2.2	3"	-	6	9.5	400	13	1100	76	-	32.9	QD-80
HE-400 DN80	4	3	3"	-	6.5	8	600	15.5	1200	76	-	39.1	QD-80
HE-550 DN80	5.5	4.1	3"	-	9.1	6	900	15.5	1350	76	-	41.1	QD-80

Specifications

Liquid Temperature		0~40°C (32~104°F)
Submersible depth		10M
Motor Part	Frequency	50Hz
	Pole	2 Pole
	Type	Dry Motor
	Insulation	Class F
	Protection	IP 68
Pump Part	Protector	Auto-cut
	Bearing	Ball Type
	Mechanical seal	Dual. Mechanical Seal
	Impeller	Vortex

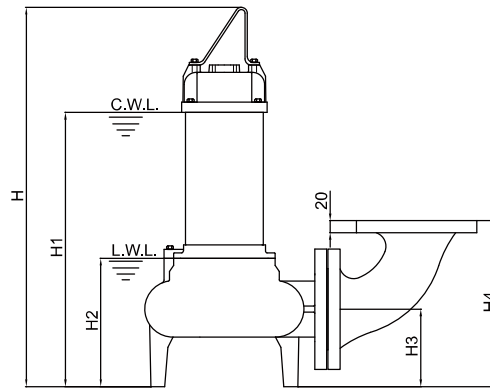
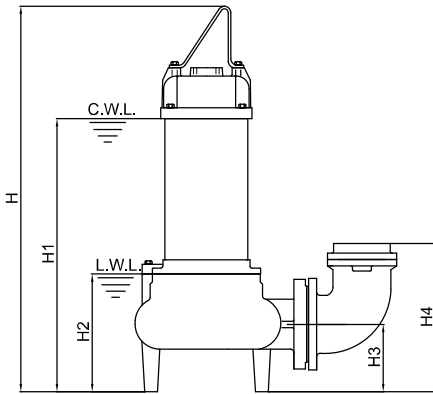
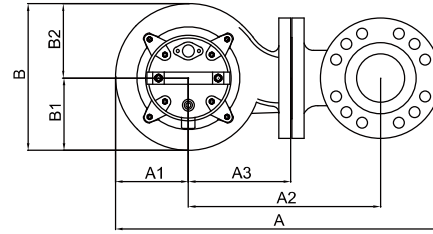
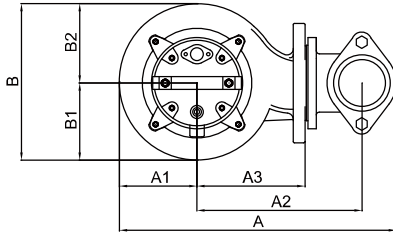
Materials

No	Part	Material
1	Cable	H07RN-F/SJTOW/STOW
2	Handle	ASTM A36
3	Motor Cover	EN-GJL-200
4	Bracket	EN-GJL-200
5	Motor Housing	AISI304
6	Shaft with Rotor	AISI410
7	Oil Chamber	EN-GJL-200
8	Double Mech.Seal	Upper : CA / CE Lower : SIC / SIC
9	Seal Housing	EN-GJL-200
10	Oil Seal	NBR
11	Impeller	EN-GJL-200
12	Pump Casing	EN-GJL-200
15-1	Upper Bearing	NTN/TPI
15-2	Lower Bearing	NTN/TPI



Note: Single lower bearing for 1.5HP/2HP; Double lower bearings for 3HP

Dimensions



HE-150~300 DN 65

HE-150~300 DN 80

Type	A	A1	A2	A3	B	B1	B2	H	H1	H2	H3	H4
HE-150 DN65	410	145	240	180	235	120	115	580	405	185	105	215
HE-200 DN65	410	145	240	180	235	120	115	600	425	185	105	215
HE-300 DN65	410	145	240	180	235	120	115	630	455	185	105	215
HE-400-DN65	399	123	229	191	247	122	125	633	477	185	105	215
HE-550DN65	399	123	229	191	247	122	125	657	490	185	105	215
HE-150 DN80	550	122	320	180	257	127	130	615	440	220	130	270
HE-200 DN80	550	122	320	180	257	127	130	635	460	220	130	270
HE-300 DN80	550	122	320	180	257	127	130	665	490	220	130	270
HE-400DN80	567	125	334	194	250	123	127	653	497	208	130	270
HE-550DN80	567	125	334	194	250	123	127	685	518	208	130	270

» All single-phase pumps can be equipped with float switch upon request

» Q.D.C. (Quick Discharge Connection) is applied to all models.